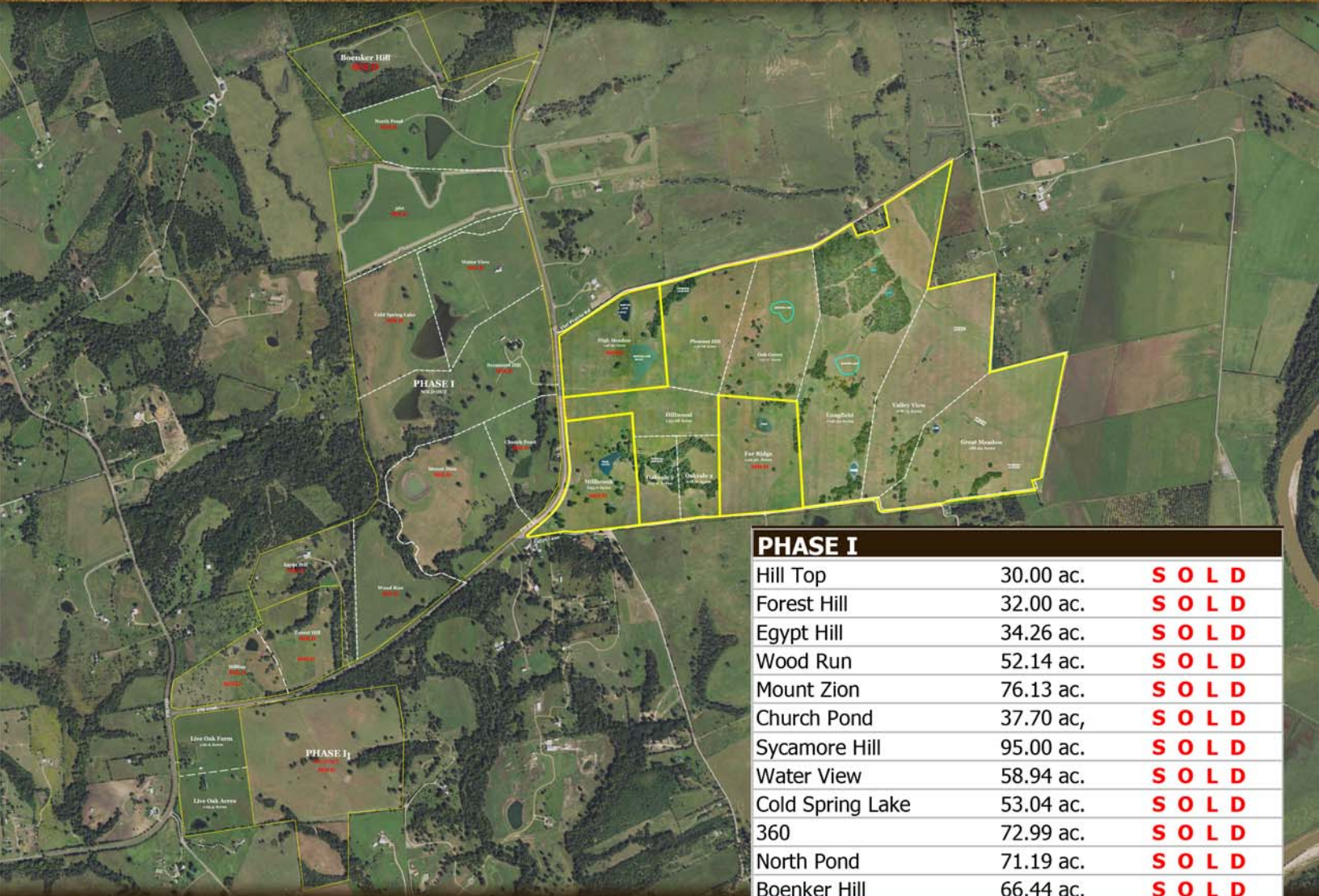


HREC #5279

FARM & RANCH
ACREAGE VARIES



PHASE I		
Hill Top	30.00 ac.	SOLD
Forest Hill	32.00 ac.	SOLD
Egypt Hill	34.26 ac.	SOLD
Wood Run	52.14 ac.	SOLD
Mount Zion	76.13 ac.	SOLD
Church Pond	37.70 ac,	SOLD
Sycamore Hill	95.00 ac.	SOLD
Water View	58.94 ac.	SOLD
Cold Spring Lake	53.04 ac.	SOLD
360	72.99 ac.	SOLD
North Pond	71.19 ac.	SOLD
Boenker Hill	66.44 ac.	SOLD

PHASE II		
Live Oak Farm	21.60 ac.	\$ 535,000
Live Oak Acres	22.40 ac.	\$ 395,000
Longhorn	120.96 ac.	SOLD

PHASE III		
High Meadow	48.30 ac.	SOLD
Pleasant Hill	46.68 ac.	\$ 727,775
Oak Grove	57.17 ac.	\$ 906,763
Longfield	141.91 ac.	\$ 1,865,125
Valley View	78.75 ac.	\$ 984,375
Great Meadow	86.64 ac.	\$ 1,083,000
Far Ridge	49.30 ac.	SOLD
Oakvale 1	19.00 ac.	\$ 345,250
Oakvale 2	18.00 ac.	\$ 323,000
Millbrook	45.00 ac.	SOLD
Hillwood	29.78 ac.	\$ 476,480

GATES RANCH
WASHINGTON COUNTY, TEXAS

HODDE
REAL ESTATE CO.

979-836-8532
WWW.HODDERE.COM

CONTACT:
RANDY HODDE
RHODDE@HODDERE.COM



GATES RANCH

PHASE III WASHINGTON COUNTY, TEXAS

Water View
SOLD

Sycamore Hill
SOLD

Church Pond
SOLD

SOLD

Millbrook
±45.0 Acres

Oakvale 1
±19.0 Acres

Oakvale 2
±18.0 Acres

SOLD

Far Ridge
±49.30 Acres

Hillwood
±29.78 Acres

SOLD

High Meadow
±48.30 Acres

Pleasant Hill
±46.68 Acres

Oak Grove
±57.17 Acres

Longfield
±141.91 Acres

Valley View
±78.75 Acres

Great Meadow
±86.64 Acres

Flat Prairie Rd

FM 2726

Egypt Lane

Pinpoint
SOLD

FM 1155

FM 2726

Live Oak Farm
±21.6 Acres

Live Oak Acres
±22.4 Acres

The information contained herein has been obtained from sources that Hodde Real Estate deem reliable; however, cannot guarantee its accuracy. Property is subject to prior sale or withdrawal from the market.